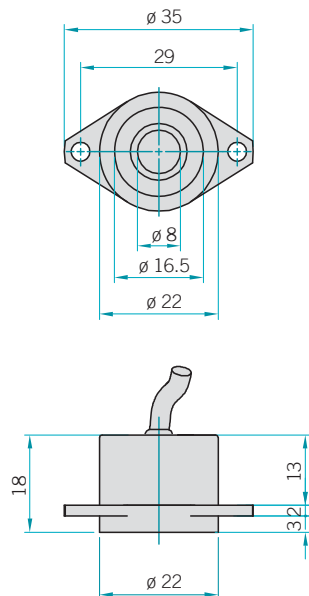
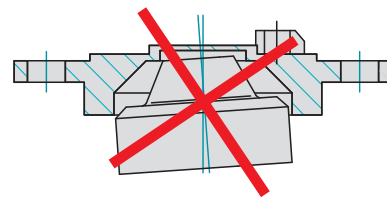
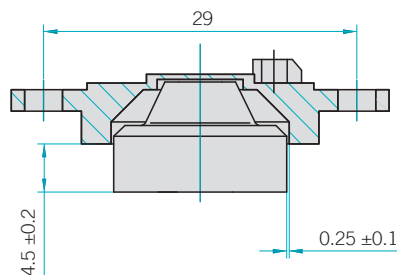
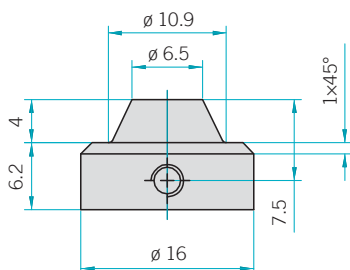
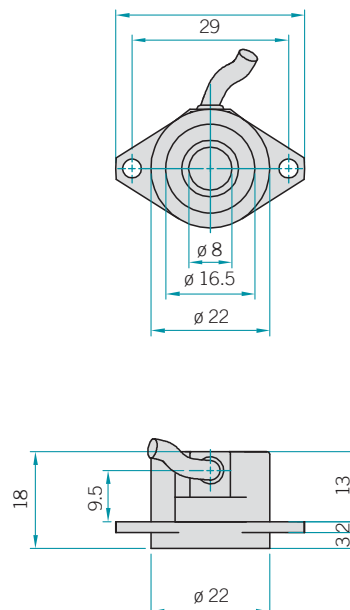


EMI 22 axial cable output



EMI 22 radial cable output



Electrical specifications

Resolution	up to 2048 ppr
Current consumption without load	100 mA max.
Max. load current	15 mA for channel
Power supply	5 V DC ±5%
Output type	line driver push-pull
Max. output frequency	200 kHz

Mechanical specifications

Bore diameter (magnet-carrier)	up to 10 mm
Enclosure rating	IP68
Max. rotation speed	10000 RPM
Shock	50 G, 11 ms
Vibration	10 G, 10÷2000 Hz
Body material	aluminium UNI 9002/5
Housing material	aluminium UNI 9002/5
Magnet-carrier material	aluminium UNI 9002/5
Operating temperature	-25÷125 °C
Storage temperature	-30÷130 °C
Weight	30 g
Mounting tolerances	axial: ±0.2 mm radial: ±0.1 mm